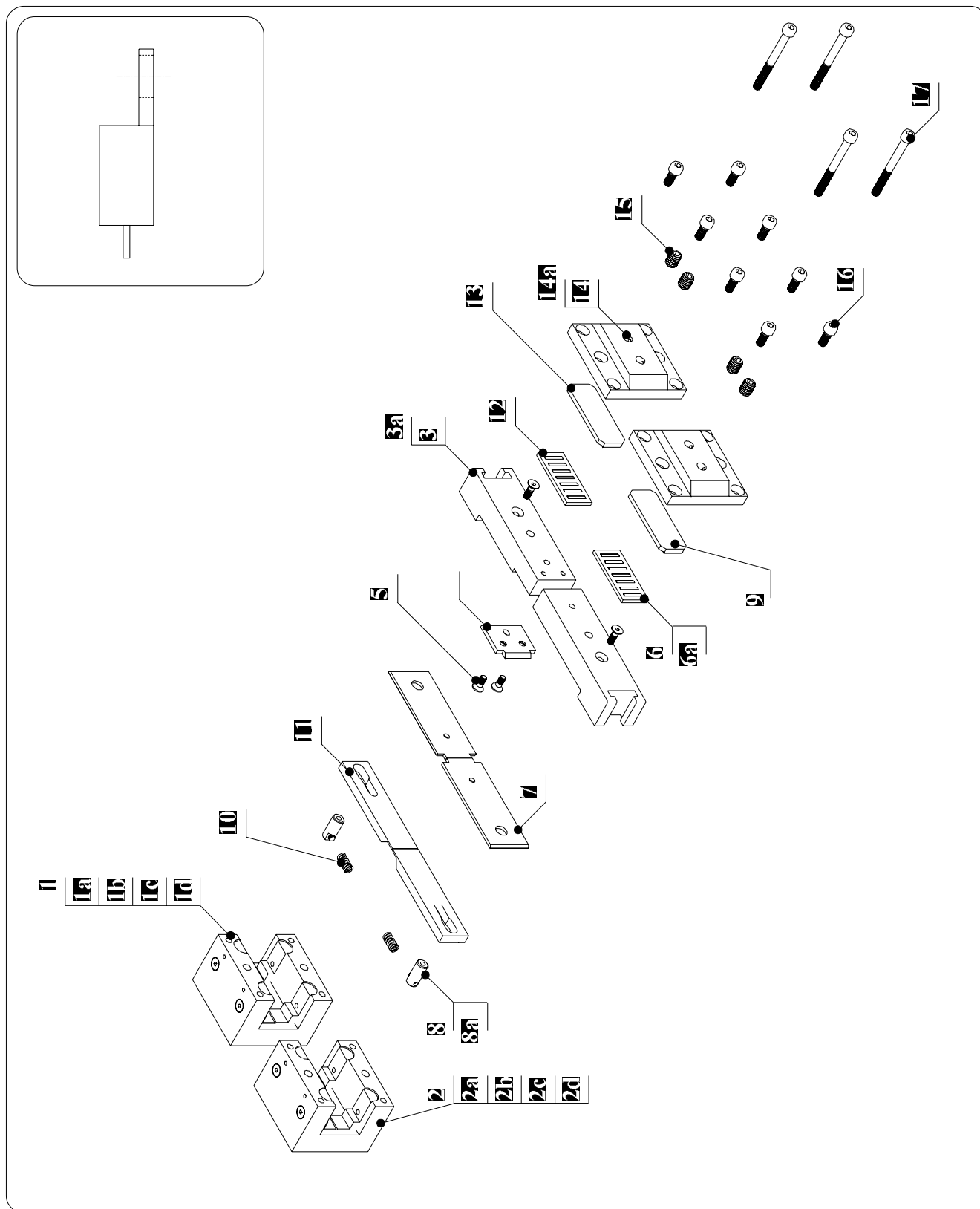


# 11.8 FORMING DIE ASSEMBLIES

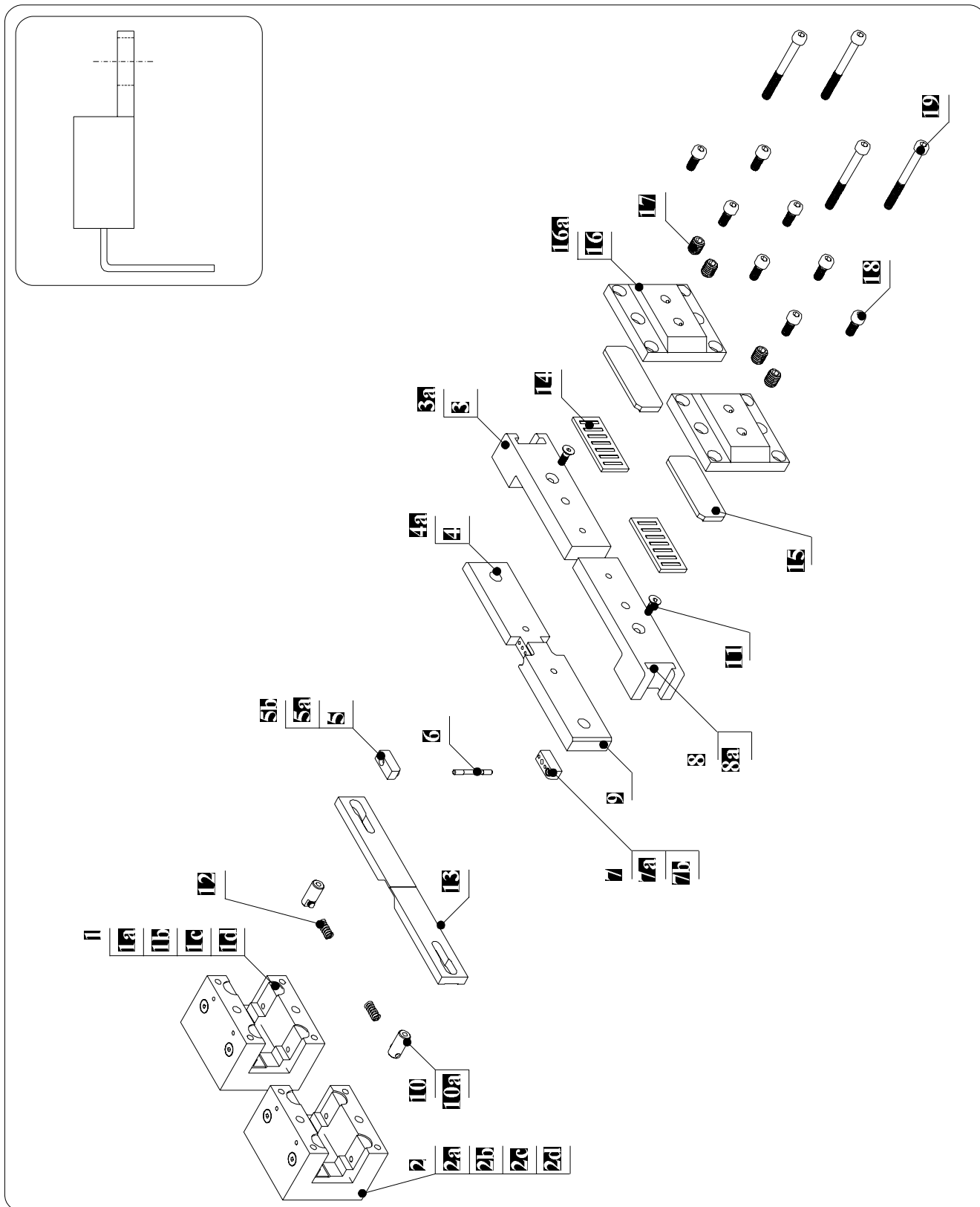
## 11.8.1 DETAILED DRAWING OF DIE ASSEMBLY STRAIGHT CUT TP/TO-CF code 121000



**11.8.1.1 LIST OF PARTS FOR DIE ASSEMBLY STRAIGHT CUT TP/TO-CF code 121000 DIE ASSEMBLY STRAIGHT CUT TP/TO-CF**

<b>Pos.</b>	<b>Code</b>	<b>Description</b>	<b>Q.ty</b>
1	122120	RIGHT DIE COMPLETE HOLDER	1
1a	122109	RIGHT DIE SUPPORT	1
1b	SPCI004010	PARALLEL PIN D. 4X10	2
1c	122102	GUIDES ON RIGHT AND LEFT ASSY SUPPORT	4
1d	770028	CS SCREW M4X12	8
2	122121	LEFT DIE COMPLETE HOLDER	1
2a	122101	LEFT DIE SUPPORT	1
2b	SPCI004010	PARALLEL PIN D. 4X10	2
2c	122102	GUIDES ON RIGHT AND LEFT ASSY SUPPORT	4
2d	770028	CS SCREW M4X12	8
3	121002	RIGHT STRAIGHT CUT DIE SUPPORT H=3 MIN	1
3a	121005	PARALLEL PIN D. 4X18	1
4	121004	CUTTING BLADE	1
5	850108/U	UNBRAKO SCREW TSEI M4X10	2
6	121001	LEFT STRAIGHT CUT DIE SUPPORT H=3 MIN	1
6a	121005	PARALLEL PIN D. 4X18	1
7	121003	RIGHT-LEFT STRAIGHT CUT DIE H=3 MIN	2
8	122107	PIN FOR DIE GUIDE AND WIRE HOLDER	2
8a	210124	SCREW PP M3X6 UNBRAKO	2
9	770028	CS SCREW M4X12	2
10	120134	COMPRESSION SPRING D11680	2
11	122104	RIGHT AND LEFT COMPONENT WIRE HOLDER	2
12	122114	FLAT CAGE FOR DIE SLIDING TO-CF	2
13	122115	PLATE FOR FLAT CAGES SLIDING	2
14	122103	LEFT AND RIGHT PLATE / DIE BASE FIXING	2
14a	122116	PRESSURE SCREW M4X10 TP/TO-CF	4
15	120135	PP SCREW M8X10	4
16	780008INOX	SCREW TCEI M5X12 STEEL	8
17	160046	SCREW TCEI M5x50	4

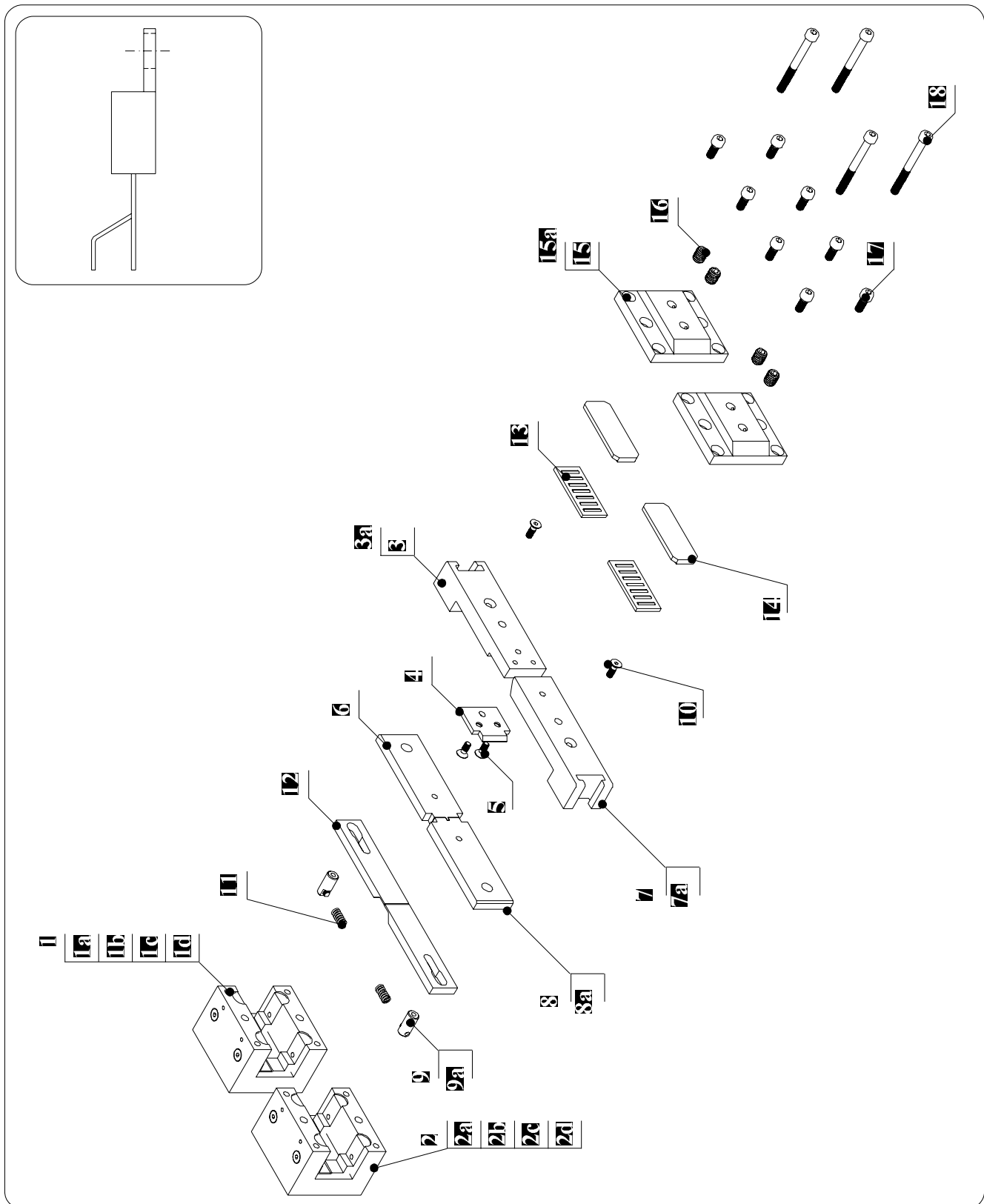
# 11.8.2 DETAILED DRAWING OF DIE ASSEMBLIES CODE. 121300 TO220-TO126-T0218 90° BENDING TP/TO-CF



**11.8.2.2 LIST OF PARTS FOR DIE ASSEMBLY CODE 121300 TO220-TO126-T0218 90°  
BENDING TP/TO-CF**

<b>Pos.</b>	<b>Code</b>	<b>Description</b>	<b>Q.ty</b>
1	122120	RIGHT DIE COMPLETE HOLDER	1
1a	122109	RIGHT DIE SUPPORT	1
1b	SPCI004010	PARALLEL PIN D. 4X10	2
1c	122102	GUIDES ON RIGHT AND LEFT ASSY SUPPORT	4
1d	770028	CS SCREW M4X12	8
2	122121	LEFT DIE COMPLETE HOLDER	1
2a	122101	LEFT DIE SUPPORT	1
2b	SPCI004010	PARALLEL PIN D. 4X10	2
2c	122102	GUIDES ON RIGHT AND LEFT ASSY SUPPORT	4
2d	770028	CS SCREW M4X12	8
3	121302	RIGHT 90° BENDING DIE SUPPORT	1
3a	760135	PARALLEL PIN M4x15	1
4	121304	90° BENDING RIGHT DIE B=6mm	1
4a	152110	CYLINDRIC PIN D. 2x10	2
5	121305	UPPER ROLLER SUPPORT	1
5a	121308	ROLLERS CAGE K3X5X7TN	1
5b	121309	CAPSCREW M2x10	1
6	121306	FORMING ROLLER	1
7	121307	LOWER ROLLER SUPPORT	1
7a	121308	ROLLERS CAGE K3X5X7TN	1
7b	121309	CAPSCREW M2x10	1
8	121301	90° BENDING LEFT DIE SUPPORT	1
8a	760135	PARALLEL PIN M4x15	1
9	121303	90° BENDING LEFT DIE B=6mm	1
10	122107	PIN FOR DIE GUIDE AND WIRE HOLDER	2
10a	210124	SCREW PP M3X6 UNBRAKO	2
11	770028	CS SCREW M4X12	2
12	120134	COMPRESSION SPRING D11680	2
13	122104	RIGHT AND LEFT COMPONENT WIRE HOLDER	2
14	122114	FLAT CAGE FOR DIE SLIDING TO-CF	2
15	122115	PLATE FOR FLAT CAGES SLIDING	2
16	122103	LEFT AND RIGHT PLATE / DIE BASE FIXING	2
16a	122116	PRESSURE SCREW M4X10 TP/TO-CF	4
17	120135	PP SCREW M8X10	4
18	780008INOX	SCREW TCEI M5X12 STEEL	8
19	160046	SCREW TCEI M5x50	4

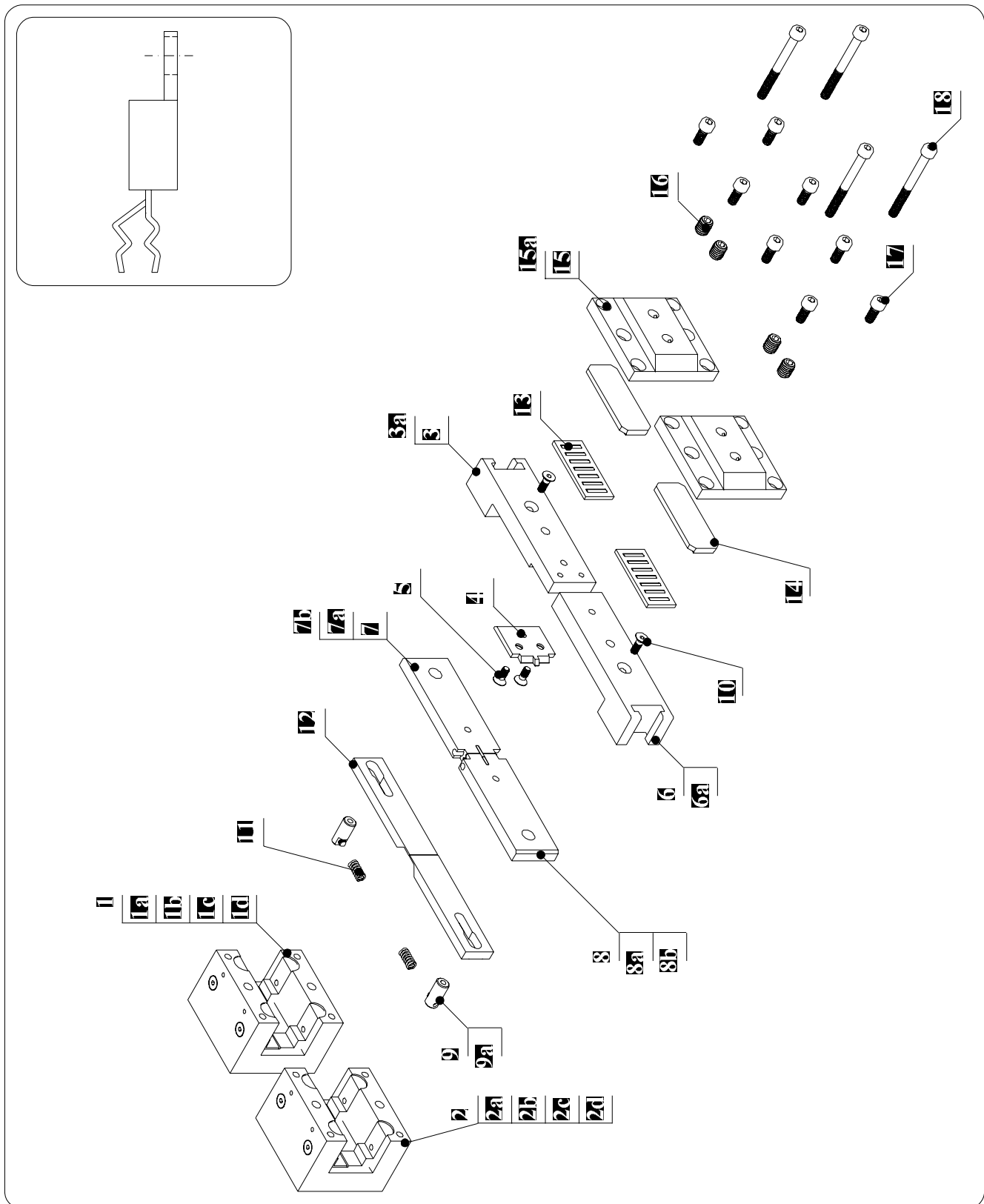
### 11.8.3 DETAILED DRAWING OF DIE ASSEMBLY CODE 122100 TO220-TO126 CENTRAL LEAD SPREAD AND CUT



**11.8.3.3 LIST OF PARTS OF DIE ASSEMBLY CODE 122100 TO220-TO126 CENTRAL LEAD SPREAD AND CUT**

<b>Pos.</b>	<b>Code</b>	<b>Description</b>	<b>Q.ty</b>
1	122120	RIGHT DIE COMPLETE HOLDER	1
1a	122109	RIGHT DIE SUPPORT	1
1b	SPCI004010	PARALLEL PIN D. 4X10	2
1c	122102	GUIDES ON RIGHT AND LEFT ASSY SUPPORT	4
1d	770028	CS SCREW M4X12	8
2	122121	LEFT DIE COMPLETE HOLDER	1
2a	122101	LEFT DIE SUPPORT	1
2b	SPCI004010	PARALLEL PIN D. 4X10	2
2c	122102	GUIDES ON RIGHT AND LEFT ASSY SUPPORT	4
2d	770028	CS SCREW M4X12	8
3	122113	RIGHT DIE SUPPORT AND CUTTING BLADE	1
3a	760135	PARALLEL PIN D 4x15	1
4	122106	CUTTING BLADE	1
5	850108/U	UNBRAKO SCREW TSEI M4X10	2
6	122105	RIGHT DIE CENTRAL LEAD SPREAD P=2,5mm	1
7	122111	LEFT DIE SUPPORT	1
7a	760135	PARALLEL PIN D 4x15	1
8	122110	LEFT DIE CENTRAL LEAD SPREAD P=2,5mm	1
8a	152110	PARALLEL PIN D. 2x10	1
9	122107	PIN FOR DIE GUIDE AND WIRE HOLDER	2
9a	210124	SCREW PP M3X6 UNBRAKO	2
10	770028	CS SCREW M4X12	2
11	120134	COMPRESSION SPRING D11680	2
12	122104	RIGHT AND LEFT COMPONENT WIRE HOLDER	2
13	122114	FLAT CAGE FOR DIE SLIDING TO-CF	2
14	122115	PLATE FOR FLAT CAGES SLIDING	2
15	122103	LEFT AND RIGHT PLATE / DIE BASE FIXING	2
15a	122116	PRESSURE SCREW M4X10 TP/TO-CF	4
16	120135	PP SCREW M8X10	4
17	780008INOX	SCREW TCEI M5X12 STEEL	8
18	160046	SCREW TCEI M5x50	4

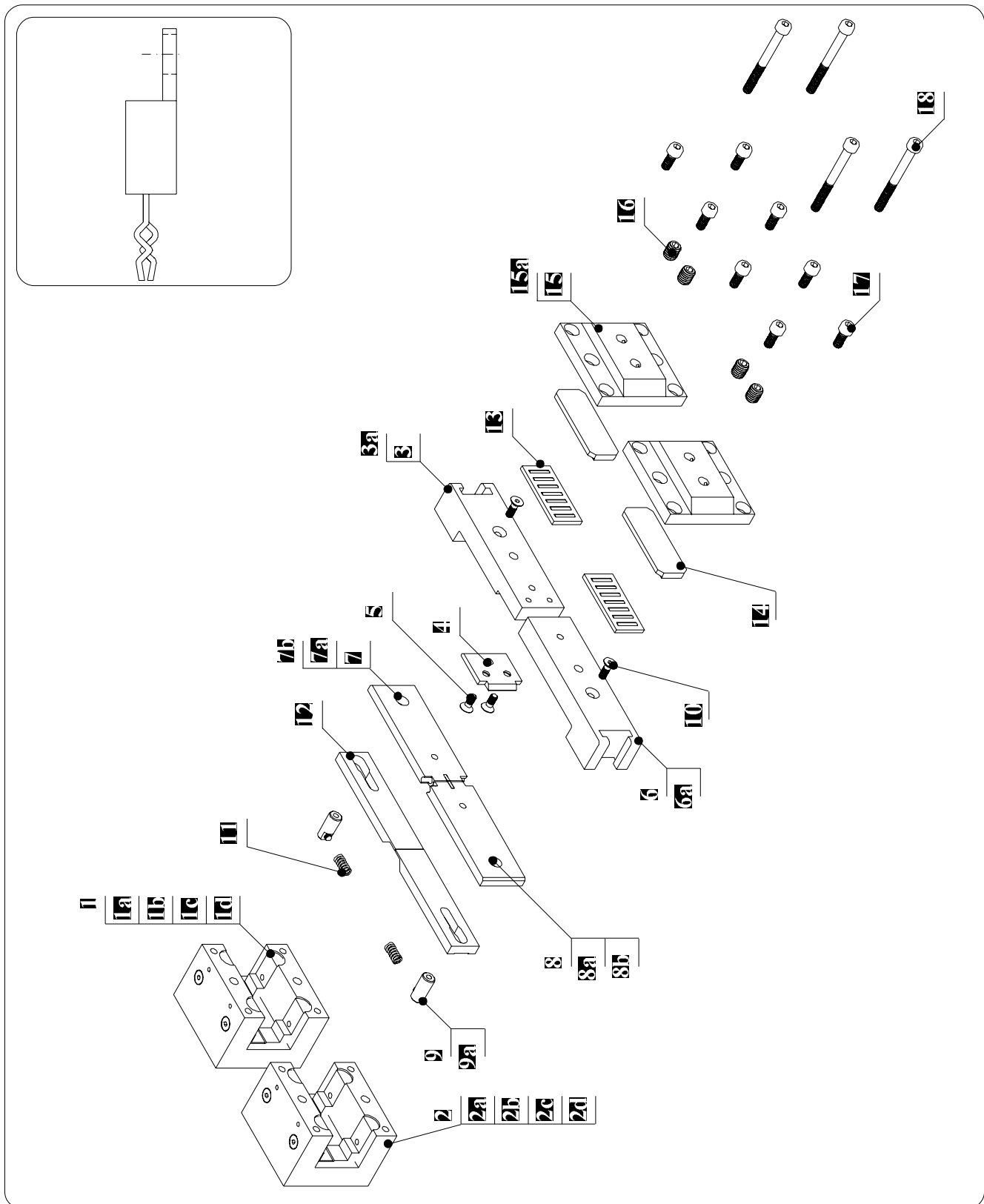
**11.8.4 DETAILED DRAWING OF DIE ASSEMBLY CODE 122300  
TO220-TO126 CENTRAL LEAD SPREAD AND DOUBLE KINK ON  
3 LEADS**



**11.8.4.4 LIST OF PARTS FOR DIE ASSEMBLY 122300 TO220-TO126 CENTRAL LEAD SPREAD AND DOUBLE KINK ON 3 LEADS**

<b>Pos.</b>	<b>Code</b>	<b>Description</b>	<b>Q.ty</b>
1	122120	RIGHT DIE COMPLETE HOLDER	1
1a	122109	RIGHT DIE SUPPORT	1
1b	SPCI004010	PARALLEL PIN D. 4X10	2
1c	122102	GUIDES ON RIGHT AND LEFT ASSY SUPPORT	4
1d	770028	CS SCREW M4X12	8
2	122121	LEFT DIE COMPLETE HOLDER	1
2a	122101	LEFT DIE SUPPORT	1
2b	SPCI004010	PARALLEL PIN D. 4X10	2
2c	122102	GUIDES ON RIGHT AND LEFT ASSY SUPPORT	4
2d	770028	CS SCREW M4X12	8
3	122302	RIGHT DIE SUPPORT	1
3a	121005	PARALLEL PIN D. 4X18	1
4	122303	CUTTING BLADE CENTRAL LEAD SPREAD P=2,54	1
5	850108/U	UNBRAKO SCREW TSEI M4X10	2
6	122301	LEFT DIE SUPPORT	1
6a	121005	PARALLEL PIN D. 4X18	1
7	122305	RIGHT DIE DOUBLE KINK ON THREE LEADS - CENTRAL LEAD SPREAD O=2,54mm	1
7a	162304	INSERT FOR PUNCH TO220 CENTER LEAD SPREAD & 3 LEAD LOC	1
7b	163005	CAPSCREW M2x10	1
8	122304	LEFT DIE, CENTER LEAD SPREAD P.= 2,54mm 3 LEADS LOCK	1
8a	152302	INSERT FOR PUNCH TO220 CENTER LEAD SPREAD & 3 LEAD LOCK.	1
8b	163005	CAPSCREW M2x10	1
9	122107	PIN FOR DIE GUIDE AND WIRE HOLDER	2
9a	210124	SCREW PP M3X6 UNBRAKO	2
10	770028	CS SCREW M4X12	2
11	120134	COMPRESSION SPRING D11680	2
12	122104	RIGHT AND LEFT COMPONENT WIRE HOLDER	2
13	122114	FLAT CAGE FOR DIE SLIDING TO-CF	2
14	122115	PLATE FOR FLAT CAGES SLIDING	2
15	122103	LEFT AND RIGHT PLATE / DIE BASE FIXING	2
15a	122116	PRESSURE SCREW M4X10 TP/TO-CF	4
16	120135	PP SCREW M8X10	4
17	780008INOX	SCREW TCEI M5X12 STEEL	8
18	160046	SCREW TCEI M5x50	4

# 11.8.5 DETAILED DRAWING OF DIE ASSEMBLY CODE 122400 TO220-TO126 DOUBLE KINK ON 3 LEADS IN LINE



**11.8.5.5 LIST OF PARTS OF DIE ASSEMBLY CODE 122400 TO220-TO126 DOUBLE KINK ON 3 LEADS IN LINE**

<b>Pos.</b>	<b>Code</b>	<b>Description</b>	<b>Q.ty</b>
1	122120	RIGHT DIE COMPLETE HOLDER	1
1a	122109	RIGHT DIE SUPPORT	1
1b	SPCI004010	PARALLEL PIN D. 4X10	2
1c	122102	GUIDES ON RIGHT AND LEFT ASSY SUPPORT	4
1d	770028	CS SCREW M4X12	8
2	122121	LEFT DIE COMPLETE HOLDER	1
2a	122101	LEFT DIE SUPPORT	1
2b	SPCI004010	PARALLEL PIN D. 4X10	2
2c	122102	GUIDES ON RIGHT AND LEFT ASSY SUPPORT	4
2d	770028	CS SCREW M4X12	8
3	122402	RIGHT DIE SUPPORT DOUBLE KINK ON THREE LEADS IN LINE	1
3a	121005	PARALLEL PIN D. 4X18	1
4	122403	CUTTING BLADE DOUBLE KINK ON THREE LEADSIN LINE	1
5	850108/U	UNBRAKO SCREW TSEI M4X10	2
6	122401	LEFT DIE SUPPORT DOUBLE KINK ON THREE LEADS IN LINE	1
6a	121005	PARALLEL PIN D. 4X18	1
7	122405	RIGHT DIE DOUBLE KINK ON THREE LEADS IN LINE	1
7a	152404	INSERT FOR PUNCH TO220 DOUBLE KINK ON 3 LEADS IN LINE	1
7b	163005	CAPSCREW M2x10	1
8	122404	LEFT DIE DOUBLE KINK ON THREE LEADS IN LINE	1
8a	152402	INSERT FOR DIE TO220 DOUBLE KINK ON 3 LEADS IN LINE	1
8b	163005	CAPSCREW M2x10	1
9	122107	PIN FOR DIE GUIDE AND WIRE HOLDER	2
9a	210124	SCREW PP M3X6 UNBRAKO	2
10	770028	CS SCREW M4X12	2
11	120134	COMPRESSION SPRING D11680	2
12	122104	RIGHT AND LEFT COMPONENT WIRE HOLDER	2
13	122114	FLAT CAGE FOR DIE SLIDING TO-CF	2
14	122115	PLATE FOR FLAT CAGES SLIDING	2
15	122103	LEFT AND RIGHT PLATE / DIE BASE FIXING	2
16a	122116	PRESSURE SCREW M4X10 TP/TO-CF	4
17	120135	PP SCREW M8X10	4
18	780008INOX	SCREW TCEI M5X12 STEEL	8
19	160046	SCREW TCEI M5x50	4