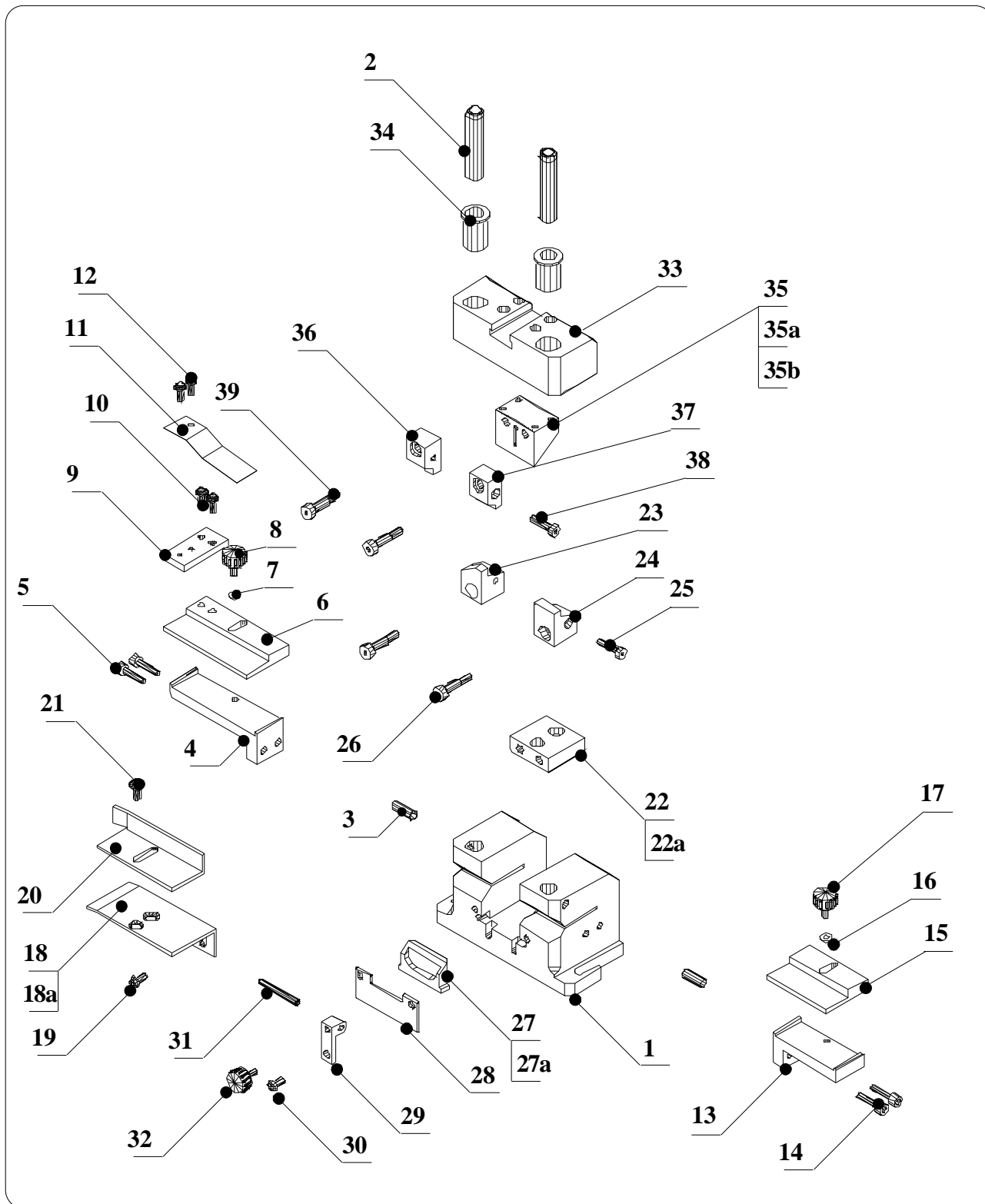


11.3 DETAILED DRAWING OF SMS cod. 93.0001



11.3.1 READING KEY FOR DETAILED DRAWING OF SMS

11.3.1.1 READING KEY FOR DETAILED DRAWING OF SMS cod. 93.0001 stand off-lock in

Pos.	Article	Description	Q.tà
1	930051	BASE FOR LOWER DIE SMS	1
2	930064	SLIDING SHAFT SMS	2
3	400305	SCREW PP M6X10	2
4	930061	SUPPORT FOR LEFT TAPE GUIDE SMS	1
5	930074	SCREW TCEIM5X20	2
6	930062	LEFT TAPE GUIDE SMS	1
7	420022	WASHER D. 5	1
8	930063	KNOB M4X15	1
9	930049	TAPE STRETCHER HOLDER	1
10	400114INOX	SCREW TBEI M4X8 STEEL	2
11	930048	TAPE STRETCHER SPRING	1
12	600050INOX	SCREW TBEI M4X6 STEEL	2
13	930059	SUPPORT FOR RIGHT TAPE GUIDE SMS	1
14	930074	SCREW TCEIM5X20	2
15	930060	RIGHT TAPE GUIDE SMS	1
16	420022	WASHER D. 5	1
17	930063	KNOB M4X15	1
18	930094	FRONT COMPONENT GUIDE SUPPORT	1
18a	740153	TUBULAR RIVET M5	2
19	750106	SCREW TBEIM5X10 UNBRAKO	1
20	930095	FRONT COMPONENTS GUIDE	1
21	750106	SCREW TBEIM5X10 UNBRAKO	1
22	930052	BLACK INSERT FOR LOWER DIE SMS	1
22a	930074	SCREW TCEIM5X20	2
23	930054	LEFT LOWER DIE/STAND OFF LOCK	1
24	930053	RIGHT LOWER DIE/STAND OFF-LOCK	1
25	930071	CAP SCREW M4X30	1

26	930073	SHOULDER CAP SCREW M5 L 20	2
27	930056	LOWER WIRE/LEAD HOLDER	1
27a	930055	SPRING D11430 D. 4.6 H=20 FOR WIRE/LEAD HOLDER SMS	2
28	930057	FRONT PLATE/WIRE HOLDER LOCKING	1
29	930058	REFERENCE PIN HOLDER/COMP.POSITIONING	1
30	750106	SCREW TBEI M5X10 UNBRAKO	1
31	930076	PARALLEL PIN D.4X35	1
32	500032	KNOB M4X8	1
33	930065	SUPPORT FOR UPPER DIE	1
34	930066	BUSHING F12/16/25 SMS ON SUPP.FOR UPPER DIE	2
35	930067	CUTTING BLADE SMS	1
35a	930075	SCREW TCEI M4X20	4
35b	930068	CONNECTION KQH04-M5 AIR EJECTION SMS	1
36	930070	LEFT UPPER DIE/STAND OFF LOCK IN	1
37	930069	RIGHT UPPER DIE/STAND OFF LOCK IN	1
38	930071	CAP SCREW M4X30	1
39	930072	SHOULDER CAP SCREW M5 L 16	2

11.3.1.2 READING KEY FOR DETAILED DRAWING OF SMS code 93.0002 STAND OFF

**** this SMS is different from SMS code 93.0001 in following parts**

Pos.	Articolo	Descrizione	Q.tà
23	930102	LEFT LOWER DIE/STAND OFF	1
24	930101	RIGHT LOWER DIE/STAND OFF	1
33	930104	SUPPORT FOR UPPER DIE/STAND	1
36	930107	LEFT UPPER DIE/STAND OFF	1
37	930106	RIGHT UPPER DIE/STAND OFF	1

11.3.1.3 READING KEY FOR DETAILED DRAWING OF SMS code 93.0003 LOCK IN - OFF SET

**** this SMS is different from SMS code 93.0001 in following parts**

Pos.	Articolo	Descrizione	Q.tà
23	930152	LEFT LOWER DIE/LOCK IN	1

24	930151	RIGHT LOWER DIE/LOCK IN	1
27	930103	WIRE/LEAD HOLDER/LOCK IN	1
33	930153	SUPPORT FOR UPPER DIE/LOCK IN	1
36	930155	LEFT UPPER DIE/LOCK IN	1
37	930154	RIGHT UPPER DIE/LOCK IN	1

11.3.1.4 READING KEY FOR DETAILED DRAWING OF SMS code 93.0004 STRAIGHT CUT

**** this SMS is different from SMS code 93.0001 in following parts**

Pos.	Item	Description	Q.ty
23	930201	LOWER DIE/STRAIGHT CUT	1
27	930202	WIRE/LEAD HOLDER/STRAIGHT CUT	1
33	930203	SUPPORT FOR UPPER DIE/STRAIGHT CUT	1
35	930205	UPPER DIE/STRAIGHT CUT	1
36	930204	CUTTING BLADE/STRAIGHT CUT	1

11.3.1.5 READING KEY FOR DETAILED DRAWING OF SMS code 93.0005 SMS POLARITY

**** this SMS is different from SMS code 93.0001 in following parts**

Pos.	Item	Description	Q.ty
23	930256	LEFT LOWER DIE POLARITY	1
24	930251	LOWER DIE/POLARITY	1
27	930252	WIRE/LEAD HOLDER/POLARITY	1
33	930104	SUPPORT FOR UPPER DIE/STAND 0,00	1
35	930255	CUTTING BLADE POLARITY	1
36	930257	LEFT UPPER DIE POLARITY	1
37	930254	UPPER DIE/POLARITY	1

11.3.1.6 READING KEY FOR DETAILED DRAWING OF SMS code 93.0006 90° BENDING

**** this SMS is different from SMS code 93.0001 in following parts**

Pos.	Item	Description	Q.ty
22	930305	BLACK INSERT FOR LOWER DIE SMS 90° BENDING	1

23	930301	LOWER DIE/90° BENDING	1
26	930072	SHOULDER CAP SCREW M5 L 16	2
27	930304	WIRE LEAD HOLDER 90° BENDING	1
27a	930055	SPRING D11430 D. 4.6 H=20 FOR WIRE/LEAD HOLDER SMS	1
33	930302	SUPPORT FOR UPPER DIE/90° BENDING	1
36	930303	UPPER DIE/90° BENDING	1

11.3.1.7 READING KEY FOR DETAILED DRAWING OF SMS code 93.0007 SURFACE MOUNTING

**** this SMS is different from SMS code 93.0001 in following parts**

Pos.	Item	Description	Q.ty
24	930351	LOWER DIE/SURFACE MOUNTING	1
27	930352	WIRE LEAD HOLDER SURFACE MOUNTING	1
33	930353	SUPPORT FOR UPPER DIE/SURFACE MOUNTING	1
35	930355	CUTITNG BLADE SURFACE MOUNTING	1
36	930354	UPPER DIE/SURFACE MOUNTING	1

11.3.1. READING KEY FOR DETAILED DRAWING OF SMS code 93.0008 TO92 CENTER LEAD SPREAD ON AND CUT P. 1,27

**** this SMS is different from SMS code 93.0001 in following parts**

Pos.	Item	Description	Q.ty
23	930403	LEFT LOWER DIE TO92 CENTER LEAD SPREAD ON AND CUT P. 1,27	1
24	930401	LOWER DIE/POWER TRANS.	1
24a	930402	LOWER CENTRAL BLACK INSERT/	1
27	930504	WIRE LEAD HOLDER TO92 CENTER LEAD SPREAD ON AND CUT	1
33	930507	SUPPORT FOR UPPER DIE TO92 CENTER LEAD SPREAD ON & CUT	1
35	930409	CUTTING BLADE TO92 CENTER LEAD SPREAD P. 1,27	1
36	930405	UPPER DIE/POWER TRANS.	1
37	930406	RIGHT UPPER DIE TO92 CENTER	1
37a	930404	CENTRAL UPPER BLACK INSERT/POWER TRANS.	1

11.3.1.10 READING KEY FOR DETAILED DRAWING OF SMS code 93.0010 TO92 CENTER LEAD SPREAD & LOCK

**** this SMS is different from SMS code 93.0001 in following parts**

Pos.	Item	Description	Q.ty
23	930502	LEFT LOWER DIE TO92 CENTER LEAD SPREAD ON AND CUT	1
24	930501	RIGHT LOWER DIE TO92 CENTER LEAD SPREAD ON AND CUT	1
24a	930503	LOWER CENTRAL BLACK INSERT TO92 CEN.LEAD SPREAD ON & CUT	1
27	930504	WIRE LEAD HOLDER TO92 CENTER	1
33	930507	SUPPORT FOR UPPER DIE TO92 CENTER LEAD SPREAD ON & CUT	1
34	930509	CUTTING BLADE TO92 CENTER LEAD SPREAD ON AND CUT	1
36	930506	LEFT UPPER DIE TO92 CENTER LEAD SPREAD ON AND CUT	1
37	930505	RIGHT UPPER DIE TO92 CENTER LEAD SPREAD ON AND CUT	1
37a	930508	UPPER CENTRAL BLACK INSERT TO92 CEN.LEAD SPREAD ON & CUT	1

11.3.1.11 READING KEY FOR DETAILED DRAWING OF SMS code 93.0011 TO92 CENTER LEAD SPREAD/ 3 LEAD LOCK

**** this SMS is different from SMS code 93.0001 in following parts**

Pos.	Item	Description	Q.ty
23	930551	LEFT LOWER DIE TO92 CENTER LEAD SPREAD 3 LEAD LOCK	1
24	930552	RIGHT LOWER DIE TO92 CENTER LEAD SPREAD 3 LEAD LOCK	1
24a	930553	LOWER CENTRAL BLACK INSERT TO92 C.LEAD SPREAD 3 LEAD LOCK	1
27	930559	WIRE LEAD HOLDER TO92 CENTER LEAD SPREAD 3 LEAD LOCK	1
33	930557	SUPPORT FOR UPPER DIE TO92 C.LEAD SPREAD 3 LEAD LOCK	1
35	930558	CUTTING BLADE TO92 CENTER LEAD SPREAD 3 LEAD LOCK	1
36	930554	LEFT UPPER DIE TO92 CENTER LEAD SPREAD 3 LEAD LOCK	1
37	930555	RIGHT UPPER DIE TO92 CENTER LEAD SPREAD 3 LEAD LOCK	1
37a	930556	UPPER CENTRAL BLACK INSERT TO92 C.LEAD SPREAD 3 LEAD LOCK	1